

PART OF THE S.W. 1/4, SEC. 16, T.5N., R.1W., S.L.B. & M.

SOUTH POINTE PLAZA PHASE 4

A CONDOMINIUM PROJECT

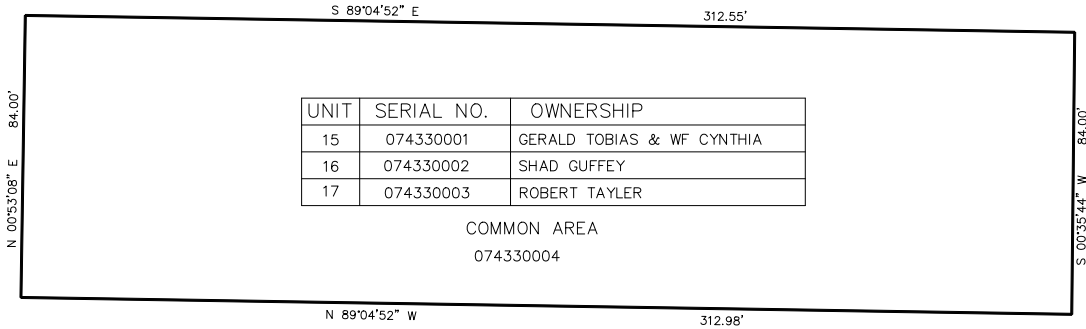
IN WASHINGTON TERRACE CITY

TAXING UNIT: 255

SCALE 1" = 30'

SEE PAGE 37

SEE PAGE 355



UNIT	SERIAL NO.	OWNERSHIP
15	074330001	GERALD TOBIAS & WF CYNTHIA
16	074330002	SHAD GUFFEY
17	074330003	ROBERT TAYLER

COMMON AREA
074330004

SEE PAGE 37

SEE PAGE 360

SEE PAGE 37

FOR COMPLETE ENG DATA SEE
ORIGINAL DEDICATION PLAT IN
BOOK 36, PAGE 43 OF RECORDS.